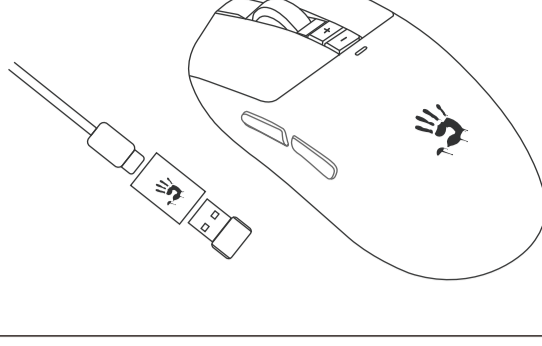




R72 Pro

QUICK START GUIDE



WHAT'S IN THE BOX



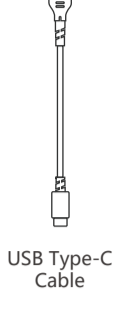
Wireless Mouse



Nano USB Receiver



USB Type-C Adaptor



USB Type-C Cable



Mouse Feet

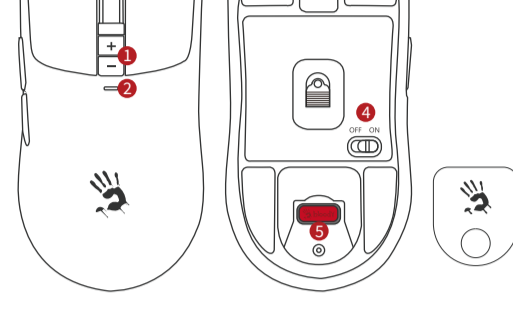


Grip Tape



User Manual

KNOW YOUR PRODUCT

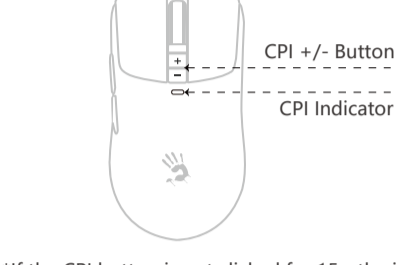


- ① CPI + / - Adjustable
- ② Function Indicator
- ③ Type-C Input Port
- ④ Power Switch
- ⑤ 2.4G Receiver Storage

CPI ADJUSTABLE



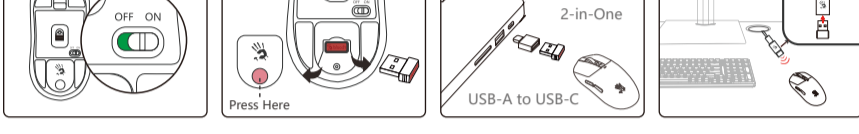
Press the CPI +/- button to switch between the default resolutions: 400, 800, 1000, 1200, 1600, 2,000 CPI. Adjustable via software: 50 - 26,000 CPI.



Indicator	Default Resolution
	400 CPI
	800 CPI
	1000 CPI
	1200 CPI
	1600 CPI
	2000 CPI

*If the CPI button is not clicked for 15s, the indicator will turn off automatically.

CONNECT 2.4G NANO RECEIVER

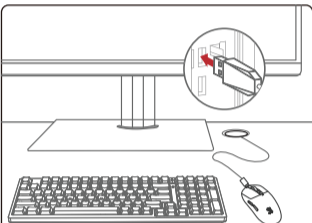


- Turn the mouse power switch on.
- Press to pop up the lid. Take out the Nano Receiver and put the lid back.
- Laptop Use:** Plug the receiver into the laptop's USB port or use the Type-C adaptor to connect the receiver to the laptop's Type-C port.
- Desktop Use:** Use the adaptor to connect the nano receiver to the USB Type-C cable, then plug it into the desktop for wireless signal anti-interference.

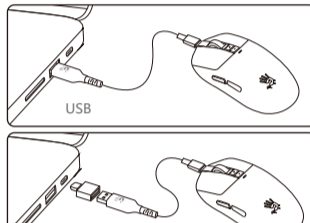
CONNECTING USB WIRED



The mouse will switch from wireless to wired mode when the USB Type-C cable is connected. **Note:** While in wired mode, the mouse charges simultaneously.

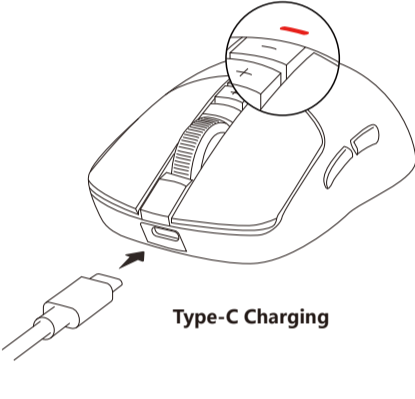


Connect to the Desktop Computer



Connect to the Laptop Computer

CHARGING & INDICATOR



- Solid Red -- Charging
- No Light -- Working
- Solid Green -- Fully Charged
- Flashes Red: Below 15% Battery

80H Battery Life **15 MINUTES** Charging Time **≈ 20 HOURS** Playback Time

DIY DISPLAY PICTURE



- Tailor Made Pre-Cut
- Easy to Apply



Pattern images of the grip tape are for reference only, shall be subjected to the actual product.

WIRELESS M-ESPORT EDITOR

Optimize your mouse settings with simple combinations and programming functions. Customize buttons, sensitivity, and macros, then save them to the mouse's on-board memory.



Download Link: <http://www.bloody.com/en/download.php>

FIRMWARE UPDATE OPERATION



Ensure the USB connection is not interrupted during the update process.

- Plug both of mouse and dongle in the USB port.
- Confirm that the mouse and nano dongle are online simultaneously.
- When prompted to upgrade the firmware, click the Upgrade button to complete the process.

Wireless Re-pairing Operation:

- Plug in the Mouse and dongle, then click the Pair code button to re-pair.

Note: Only newly purchased USB Nano receivers need to be re-paired.



Q&A



Question When connected in 2.4G wireless mode, the mouse sometimes lags. How can I fix this?

- Answer** Check the following:
- Ensure the USB Nano receiver is connected to the adaptor and the USB Type-C cable is properly plugged in.
 - Make sure the wireless environment is within 30-100 cm, without obstacles or metal objects.
 - Ensure there are no strong wireless routers or other interference sources within 1 meter.

Q&A



Question Wireless 1000Hz transmission is smooth like wired. Can I achieve the same with 500Hz?

Answer 1000Hz wireless transmission has a 1ms response time, whereas 500Hz has 2ms. Choose the appropriate report rate based on your gaming needs.

Question How many wireless devices can be used in the same environment?

Answer We recommend using 10 units or fewer. For more than 10 units, maintain a distance of 1.5m to 3m between them.

Q&A



Question Will other wireless devices at home cause interference with my mouse?

- Answer** This mouse features advanced anti-interference technology:
- Excellent interference resistance, transmitting four times within 1ms (conventional products transmit once).
 - Intelligent frequency hopping to dynamically adjust power (0-6dB), reducing the need for hopping (conventional products have fixed power).
 - The USB anti-interference extension cable creates a clean wireless environment (reducing metal and obstacle attenuation).

TECH SPEC

Sensor:	PAW3395 Gaming Optical Engine
Wireless Transmission:	1ms
Operation Range:	10 m
Default Resolution:	400-800-1,000-1,200-1,600-2,000 CPI
Adjustable by Software:	50-26,000 CPI
Frame Speed:	Self-Adjusting
Adjustable by Software:	Self-Adjusting
Acceleration:	50 G
Tracking Speed:	650 IPS
Report Rate:	1000Hz Adjustable
Battery:	300 mAh Lithium Battery
Charging Time:	≤ 1.5 Hours
Playtime:	≤ 80 Hours
Micro-Switch:	Over 30 Million Clicks (Left / Right Button)
Wheel:	Over 800,000 Scrolls
USB Type-C Soft Braided Cable:	180 cm
Size:	125 x 63 x 40 mm
Weight:	70 g (w/o cable)



WARNING STATEMENT

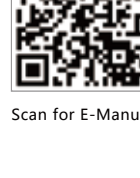


The following actions may cause damage to the product:

- Disassembling, bumping, crushing, or throwing into the fire can cause irreparable damage due to lithium battery leakage.
- Avoid exposing to strong sunlight.
- Follow local laws for battery disposal; recycle if possible. Improper disposal may cause fire or explosion.
- Avoid charging in environments below 0°C.
- Do not remove or replace the battery.
- Do not use chargers with outputs from 6V to 24V. Use a 5V charger to avoid damage.



www.Bloody.com



Scan for E-Manual